

Letchworth State Park (North Section)

1 Letchworth State Park, Castile, NY 14427

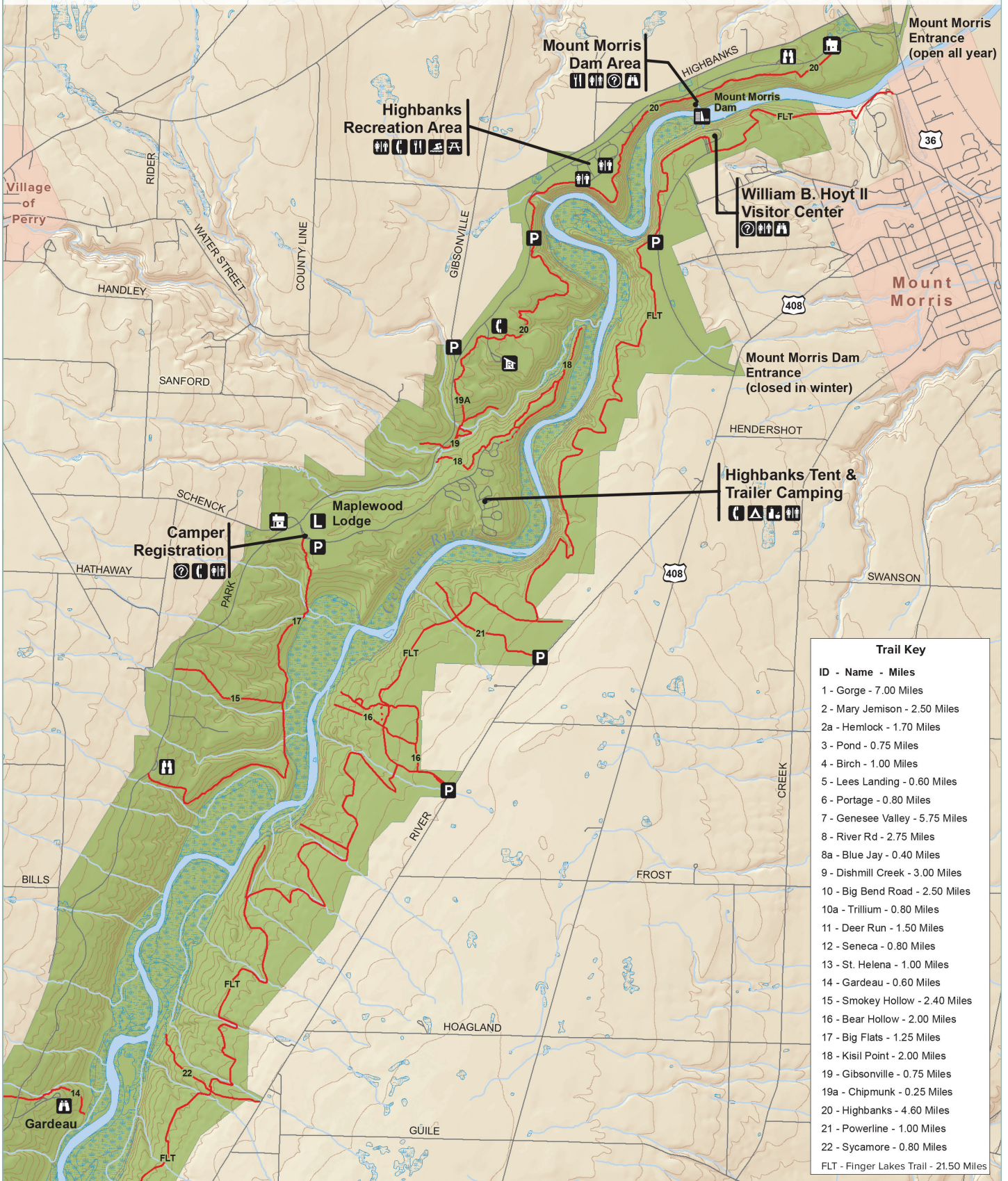
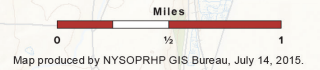


- Legend**
- Administration
 - Cabin - Rental
 - Camping Site
 - Comfort Station
 - Concession Stand
 - Contact Station
 - Dam
 - Fishing Dock
 - Information
 - Lodge/Inn
 - Museum
 - Park Police
 - Parking Area
 - Picnic Area
 - Scenic View
 - Shelter
 - Store
 - Swimming Pool
 - Telephone
 - Tubing/Sledding Hill
 - Waterfall
 - Marked Trail
 - Unmarked Trail
 - Unpaved Road
 - Roads
 - Railroad
 - Stream
 - State Park
 - Village
 - Water
 - Wetland

Park Office: (585) 493-3600
 Genesee Regional Office: (585) 493-3600
 Park Police: (585) 658-4692
 In Case of Emergency: 911



Please be considerate of other park users.
 Please report any accident or incident immediately to park police.
 All boundaries and trails are shown as approximate.
 Be aware of changing trail conditions.

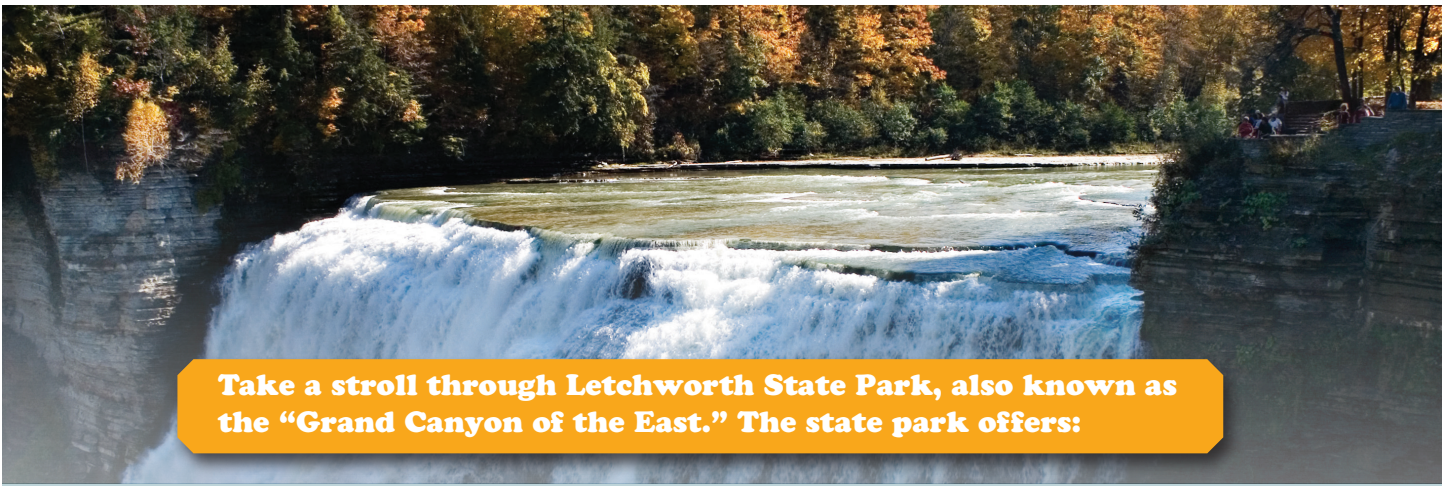


Trail Key	
ID	Name - Miles
1	Gorge - 7.00 Miles
2	Mary Jemison - 2.50 Miles
2a	Hemlock - 1.70 Miles
3	Pond - 0.75 Miles
4	Birch - 1.00 Miles
5	Lees Landing - 0.60 Miles
6	Portage - 0.80 Miles
7	Genesee Valley - 5.75 Miles
8	River Rd - 2.75 Miles
8a	Blue Jay - 0.40 Miles
9	Dishmill Creek - 3.00 Miles
10	Big Bend Road - 2.50 Miles
10a	Trillium - 0.80 Miles
11	Deer Run - 1.50 Miles
12	Seneca - 0.80 Miles
13	St. Helena - 1.00 Miles
14	Gardeau - 0.60 Miles
15	Smokey Hollow - 2.40 Miles
16	Bear Hollow - 2.00 Miles
17	Big Flats - 1.25 Miles
18	Kisil Point - 2.00 Miles
19	Gibsonville - 0.75 Miles
19a	Chipmunk - 0.25 Miles
20	Highbanks - 4.60 Miles
21	Powerline - 1.00 Miles
22	Sycamore - 0.80 Miles
FLT	Finger Lakes Trail - 21.50 Miles



← SCAN THIS CODE FOR A VIRTUAL TOUR!

INFORMATION AND MAP COURTESY OF NEW YORK STATE PARKS, RECREATION AND HISTORIC PRESERVATION:
<https://parks.ny.gov/parks/79/details.aspx>



Take a stroll through Letchworth State Park, also known as the “Grand Canyon of the East.” The state park offers:

- Nature, history, and performing arts programs
- Guided walks, tours
- A summer lecture series
- Whitewater rafting
- Kayaking

- Swimming pool
- Hot air ballooning
- 3 major waterfalls
- Hike 66 miles of trails
- Tent and trailer campsites
- Winterized cabins

Visit the Humphrey Nature Center that offers year-round environmental education opportunities and interactive exhibits that highlight the biology, geology, and river ecology of Letchworth State Park.

New York State Assembly • Albany, NY 12248

PRSRT STD.
US Postage
PAID
Albany, NY
Permit No. 75

**ASSEMBLYWOMAN
MARJORIE BYRNES**

**Invites You
To Explore
Our Region!**



**Marjorie
Byrnes**
ASSEMBLYWOMAN



**Marjorie
Byrnes**
ASSEMBLYWOMAN

**FOR MORE INFORMATION ON THIS OR
ANY OTHER STATE ISSUE, CONTACT ME:**
79 Genesee Street, Avon, NY 14414
byrnesm@nyassembly.gov
(585) 218-0038

**FOR MORE
INFORMATION:**

Letchworth State Park

<https://letchworthpark.com/>
<https://parks.ny.gov/parks/79/details.aspx>
(585) 493-3600

Humphrey Nature Center

1 Letchworth State Park
Castile, NY 14427
(585) 493-3680
Open daily from
10:00 a.m. – 5:00 p.m.